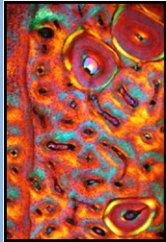




# 3rd International Symposium on Paleohistology Bonn, Germany July 2<sup>nd</sup> – 5<sup>th</sup>, 2015

## HISTOLOGY TECHNIQUES WORKSHOPS

### Beginner's Course – Thursday, July 2<sup>nd</sup>, 8am-noon



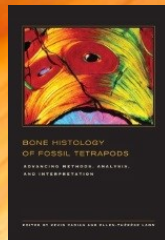
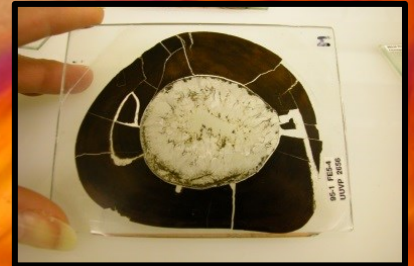
- Extracting Specimens
- Molding & Casting with Dental Compounds
- Embedding in Polyester Resin
- Cutting & Mounting Serial Sections
- Grinding & Polishing with Multiple Abrasives
- Curation of Thin-section Slides and Materials



### Advanced Course – Thursday, July 2<sup>nd</sup>, 1-5pm



- Using Special Materials for Small Specimens
- Adapting Techniques for Large Specimens
- Restoring Research Specimens
- Sectioning Modern Bone using Epoxy Resin
- Staining Modern Bone with Toluidine-blue



**Bone Histology  
Book Raffles !**

- Beginner's Course: \$25.00 USD
  - Advanced Course: \$35.00 USD
- Please Register by April 30<sup>th</sup> 2015. Class size is limited.

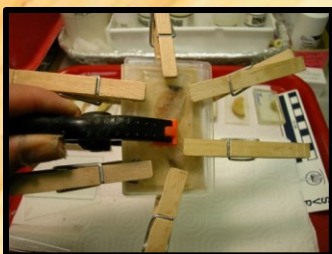
### For Registration and Questions

Please contact Instructor-  
Ellen-Thérèse Lamm at:

[etlamm.histology@gmail.com](mailto:etlamm.histology@gmail.com)

Histology Lab Manager - Museum of the Rockies  
- Montana State University

Payable by Paypal at: [www.morhistologylab.org](http://www.morhistologylab.org)



### In Addition - Free and Open to All! Techniques Troubleshooting Session

Friday, July 3<sup>rd</sup> – 6-8pm

Please bring your most challenging specimens and thin-section difficulties to share processing ideas and technique solutions with colleagues.

